


Processor

Name	Intel Core i7 6700HQ				
Code Name	Skylake	Max TDP	45.0 W		
Package	Socket 1440 FCBGA				
Technology	14 nm	Core VID	1.071 V		
Specification	Intel® Core™ i7-6700HQ CPU @ 2.60GHz				
Family	6	Model	E	Stepping	3
Ext. Family	6	Ext. Model	5E	Revision	R0
Instructions	MMX, SSE, SSE2, SSE3, SSSE3, SSE4.1, SSE4.2, EM64T, VT-x, AES, AVX, AVX2, FMA3, TSX				

Clocks (Core #0)

Core Speed	3291.95 MHz
Multiplier	x 33.0 (8 - 35)
Bus Speed	99.76 MHz
Rated FSB	

Cache

L1 Data	4 x 32 KBytes	8-way
L1 Inst.	4 x 32 KBytes	8-way
Level 2	4 x 256 KBytes	4-way
Level 3	6 MBytes	12-way

Selection

Socket #1

Cores

4

Threads

8

CPU-Z

CPU

Caches

Mainboard

Memory

SPD

Graphics

Bench

About

L1 D-Cache

Size

32 KBytes

x 4

Descriptor

8-way set associative, 64-byte line size

L1 I-Cache

Size

32 KBytes

x 4

Descriptor

8-way set associative, 64-byte line size

L2 Cache

Size

256 KBytes

x 4

Descriptor

4-way set associative, 64-byte line size

L3 Cache

Size

6 MBytes

Descriptor

12-way set associative, 64-byte line size

Size

Descriptor

Speed


CPU-Z




Ver. 1.87.0.x64

Tools

Validate

Close

 CPU-Z



CPU | Caches **Mainboard** | Memory | SPD | Graphics | Bench | About |

Motherboard

Manufacturer	GIGABYTE		
Model	P17FR5	Not Applicable	
Chipset	Intel	Skylake-H	Rev. 07
Southbridge	Intel	Skylake-H PCH	Rev. 31
LPCIO			

BIOS

Brand	American Megatrends Inc.		
Version	1.05.01RGI4		
Date	07/15/2016		

Graphic Interface

Version		PCI-Express	
Link Width		Max. Supported	
Side Band Addressing			

CPU-Z

Ver. 1.87.0.x64

Tools ▼

Validate

Close



- CPU
- Caches
- Mainboard
- Memory
- SPD
- Graphics
- Bench
- About

General

Type	DDR4	Channel #	Single
Size	8 GBytes	DC Mode	
		NB Frequency	3090.2 MHz

Timings

DRAM Frequency	1063.9 MHz
FSB:DRAM	1:16
CAS# Latency (CL)	15.0 clocks
RAS# to CAS# Delay (tRCD)	15 clocks
RAS# Precharge (tRP)	15 clocks
Cycle Time (tRAS)	36 clocks
Row Refresh Cycle Time (tRFC)	278 clocks
Command Rate (CR)	2T
DRAM Idle Timer	
Total CAS# (tRDRAM)	
Row To Column (tRCD)	

CPU-Z

CPU | Caches | Mainboard | Memory | SPD | Graphics | Bench | About

Memory Slot Selection

Slot #1

DDR4

Module Size

8192 MBytes

Correction

Max Bandwidth

DDR4-2132 (1066 MHz)

Registered

Manufacturer

Micron Technology

Ranks

Dual

Part Number

16ATF1G64HZ-2G1A2

SPD Ext.

Serial Number

132398DB

Week/Year

27 / 16

Timings Table

JEDEC #6

JEDEC #7

JEDEC #8

JEDEC #9

Frequency

1066 MHz

1066 MHz

1066 MHz

1066 MHz

CAS# Latency

15.0

16.0

18.0

19.0

RAS# to CAS#

15

15

15

15

RAS# Precharge

15

15

15

15

tRAS

36

36

36

36

tRC

50

50

50

50

Command Rate

Voltage

1.20 V

1.20 V

1.20 V

1.20 V

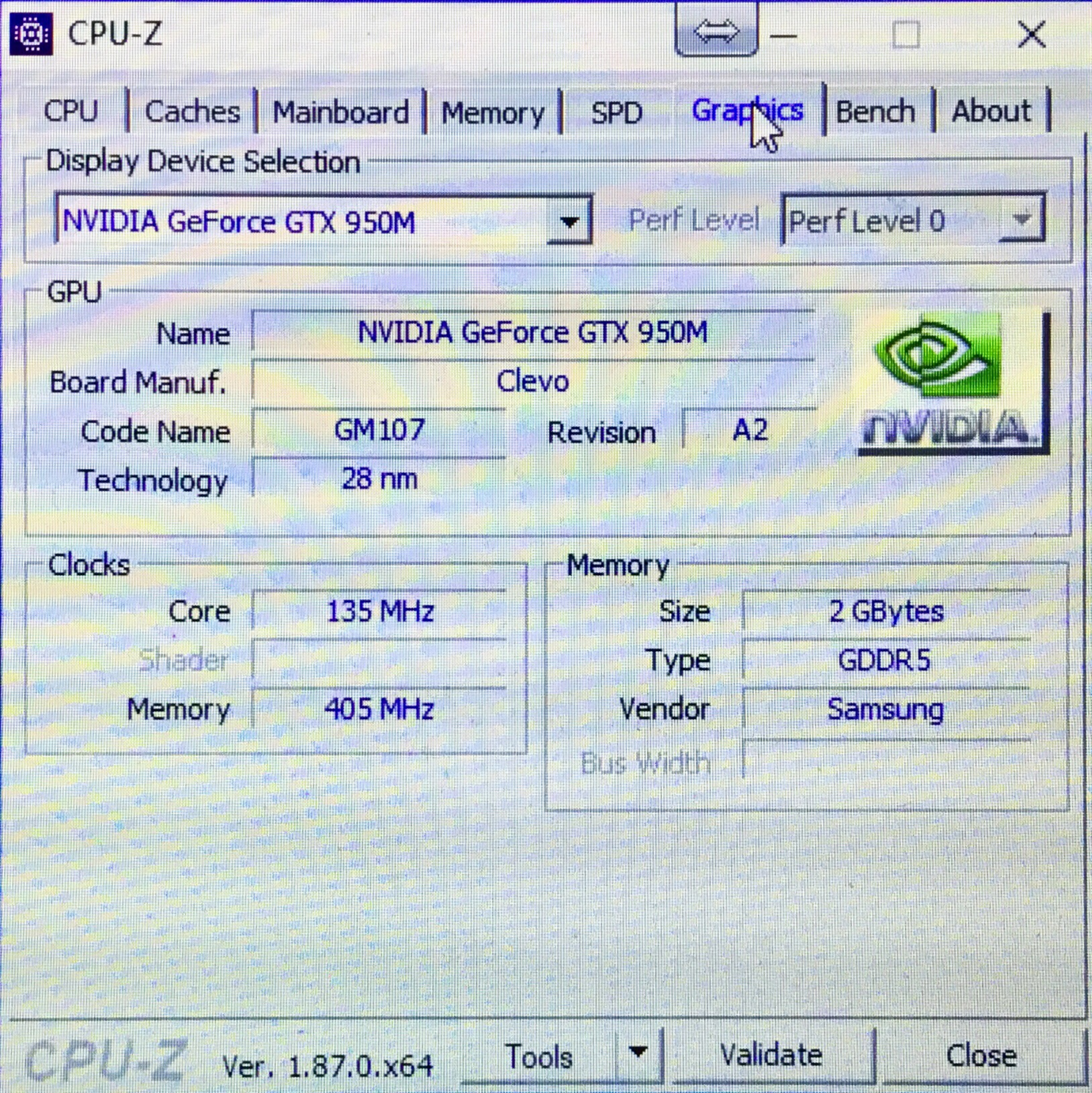
CPU-Z

Ver. 1.87.0.x64

Tools

Validate

Close



CPU-Z



CPU | Caches | Mainboard | Memory | SPD | **Graphics** | Bench | About

Display Device Selection

NVIDIA GeForce GTX 950M

Perf Level

Perf Level 0

GPU

Name

NVIDIA GeForce GTX 950M

Board Manuf.

Clevo

Code Name

GM107

Revision

A2

Technology

28 nm



Clocks

Core

135 MHz

Shader

Memory

405 MHz

Memory

Size

2 GBytes

Type

GDDR5

Vendor

Samsung

Bus Width

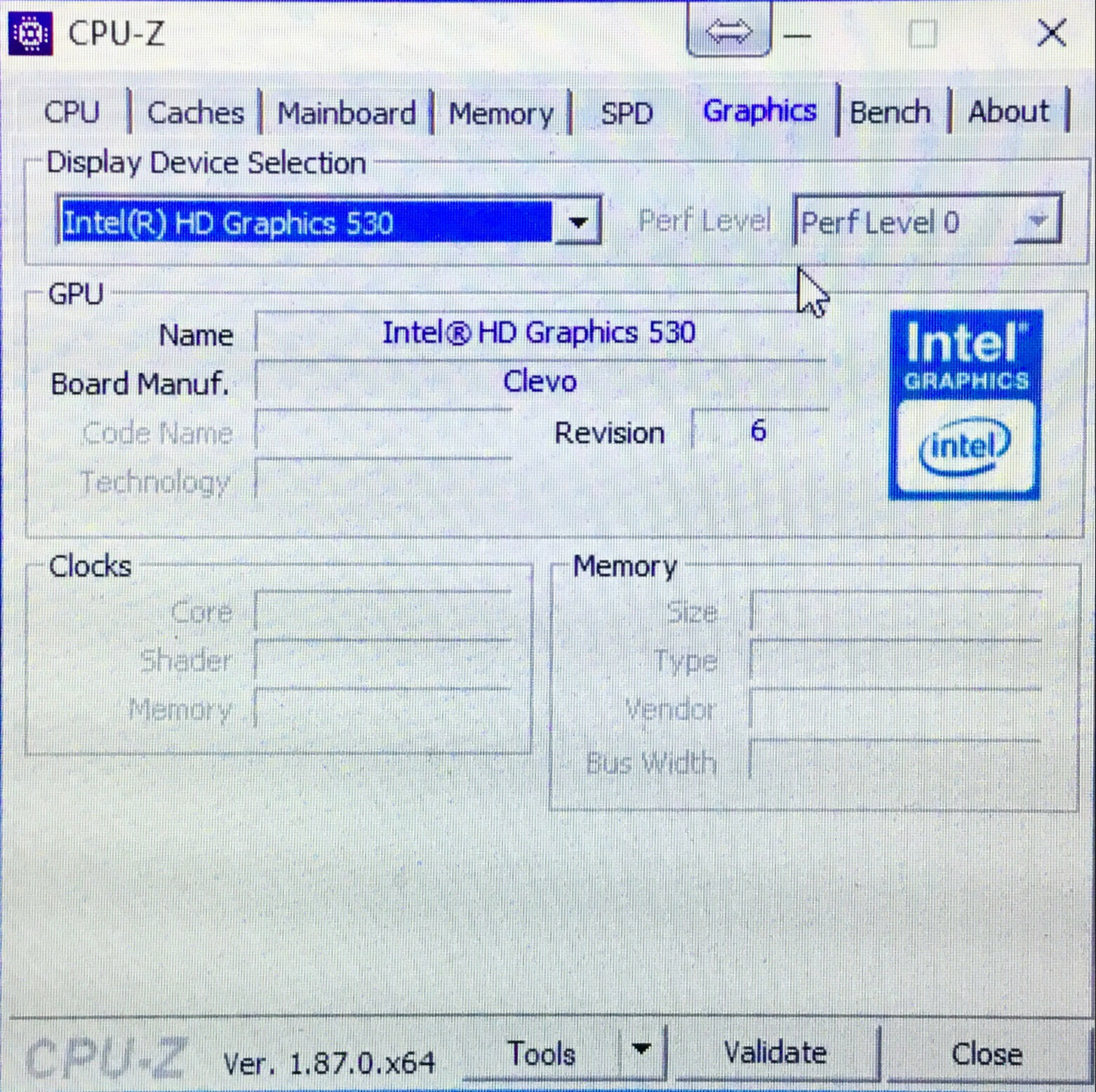
CPU-Z

Ver. 1.87.0.x64

Tools

Validate

Close



Display Device Selection

Intel(R) HD Graphics 530

Perf Level Perf Level 0

GPU

Name

Intel® HD Graphics 530

Board Manuf.

Clevo

Code Name

Revision

6

Technology

Intel
GRAPHICS



Clocks

Core

Shader

Memory

Memory

Size

Type

Vendor

Bus Width