

889Beta\_Lion\_AppleHDA

AppleHDA.kext, 5.1 MB 1/5/12 12:08 AM v2.1.3

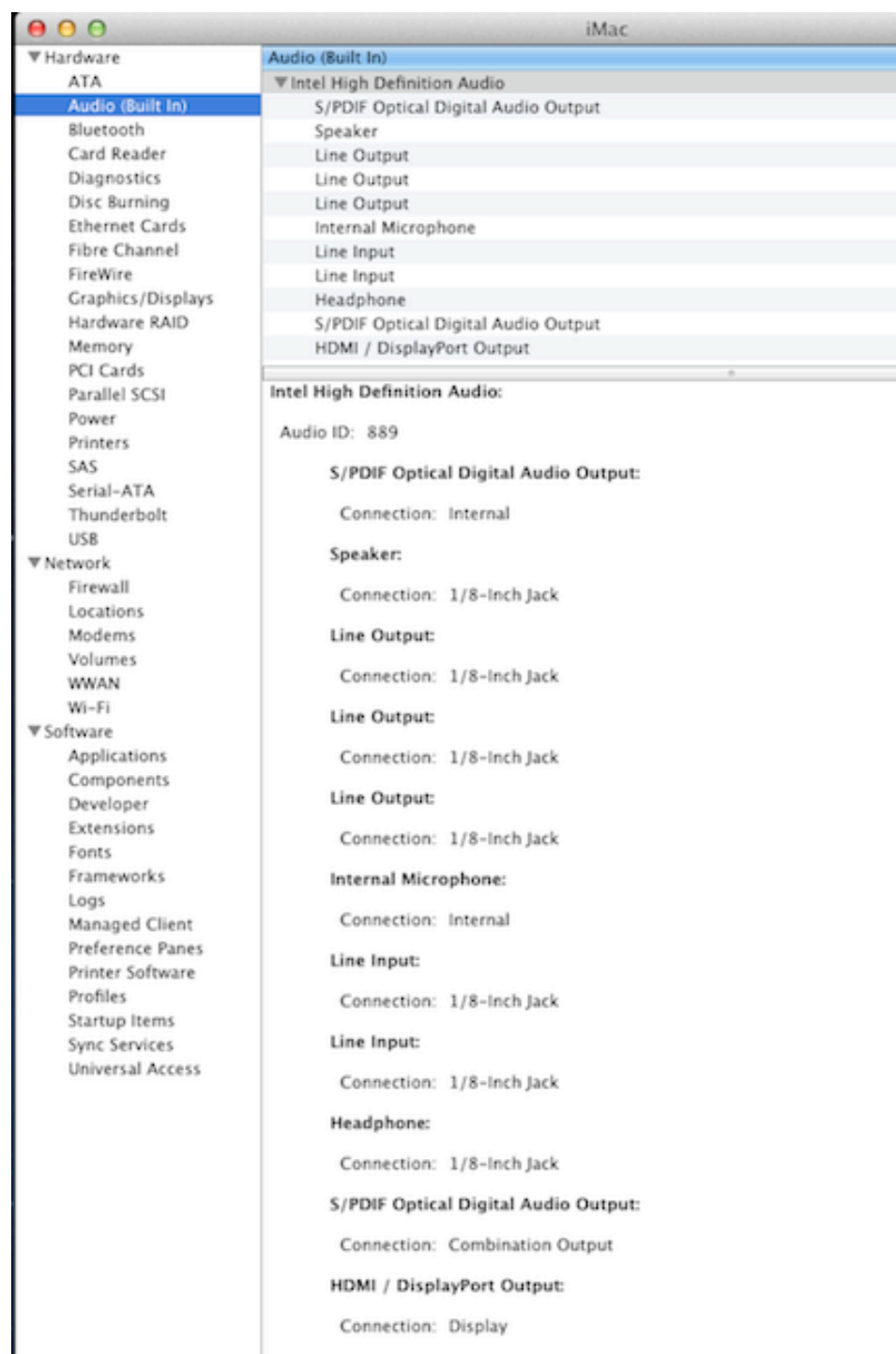
Contentts

Part 1. System Information/Audio (Built-in) Screenshots

Part 2: System Preferences/Sound and Audi MIDI Setup Screenshots

Part 3. DSDT/HDEF Edits

## Part 1. System Information/Audio (Built-in) Screenshots



System Information/Audio (Built-in)

Audio ID: 889 (ALC 889 on board audio with or without AMD/Nvidia HDMI audio)

Note: Ignore the first S/PDIF Optical Digital Audio Output

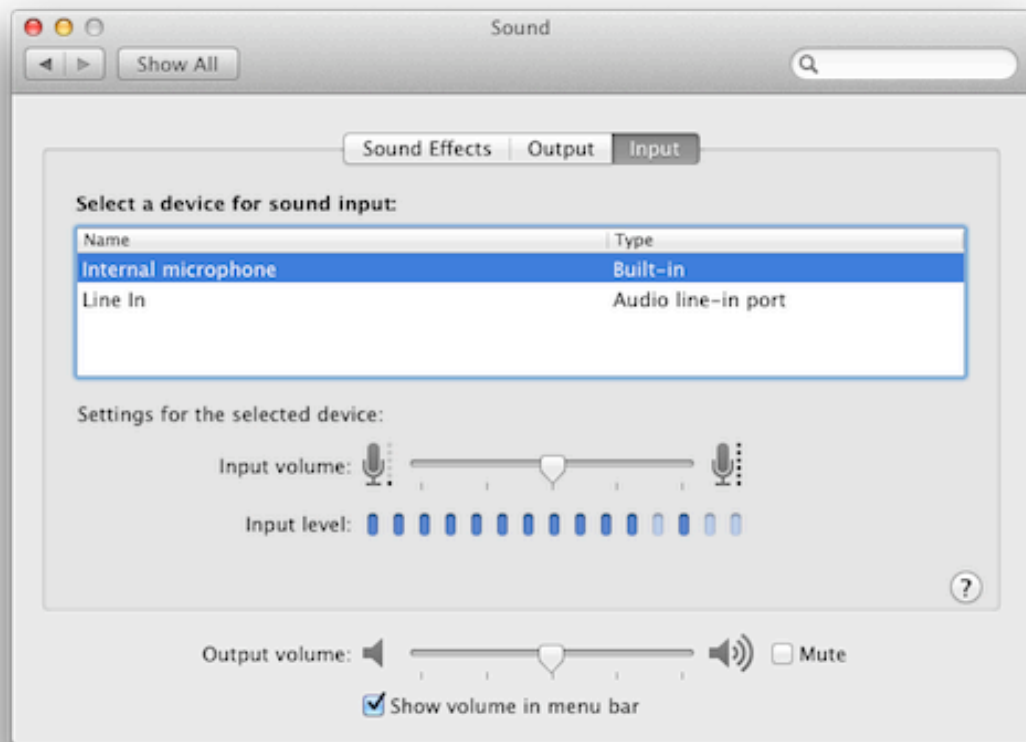


System Information/Audio (Built-in)

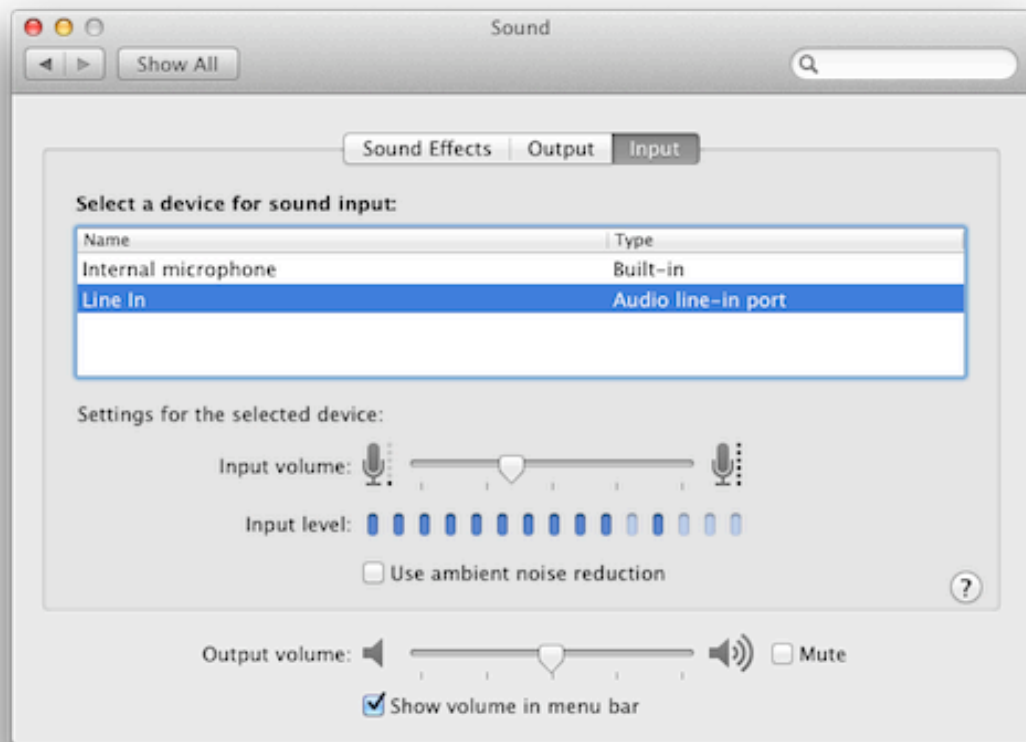
Audio ID: 389 (HD3000 HDMI audio only)

Note: Ignore the first S/PDIF Optical Digital Audio Output

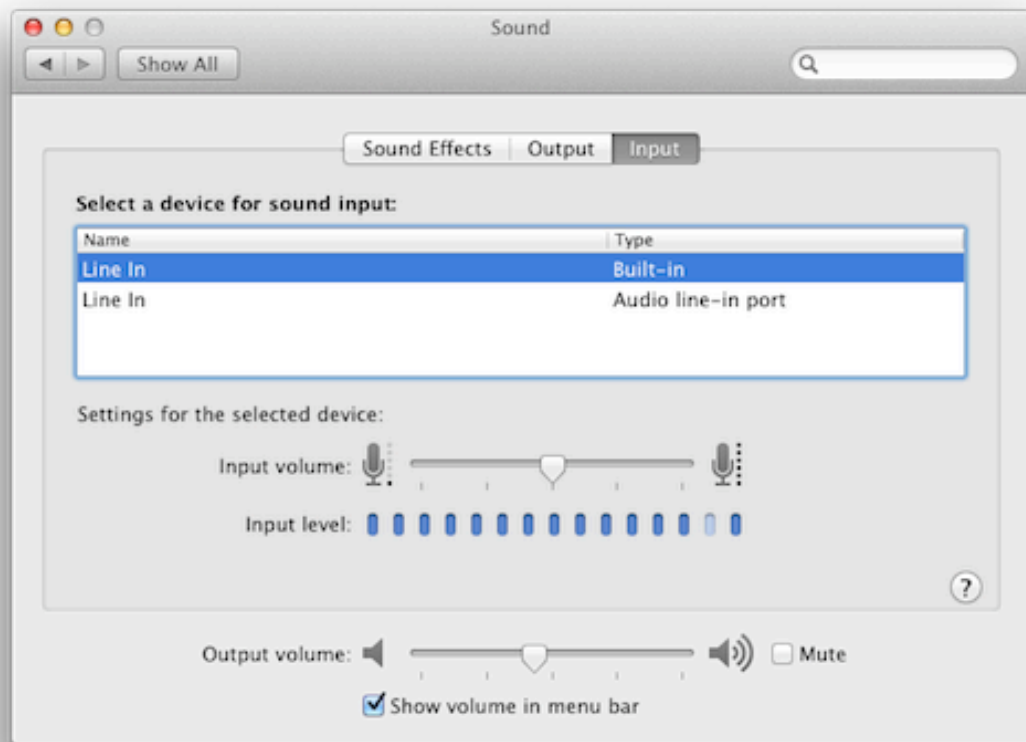
## Part 2: System Preferences/Sound and Audi MIDI Setup Screenshots



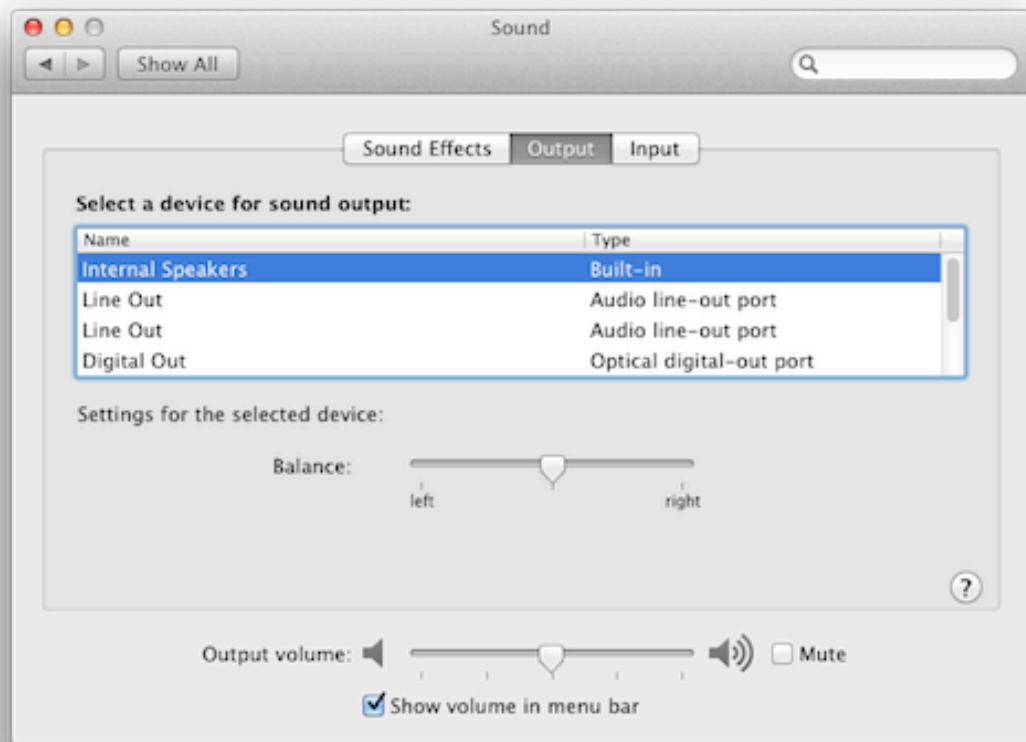
System Preferences/Sound/Input  
Internal Microphone - Pink Rear Port  
Audio ID: 889  
Audio ID: 389



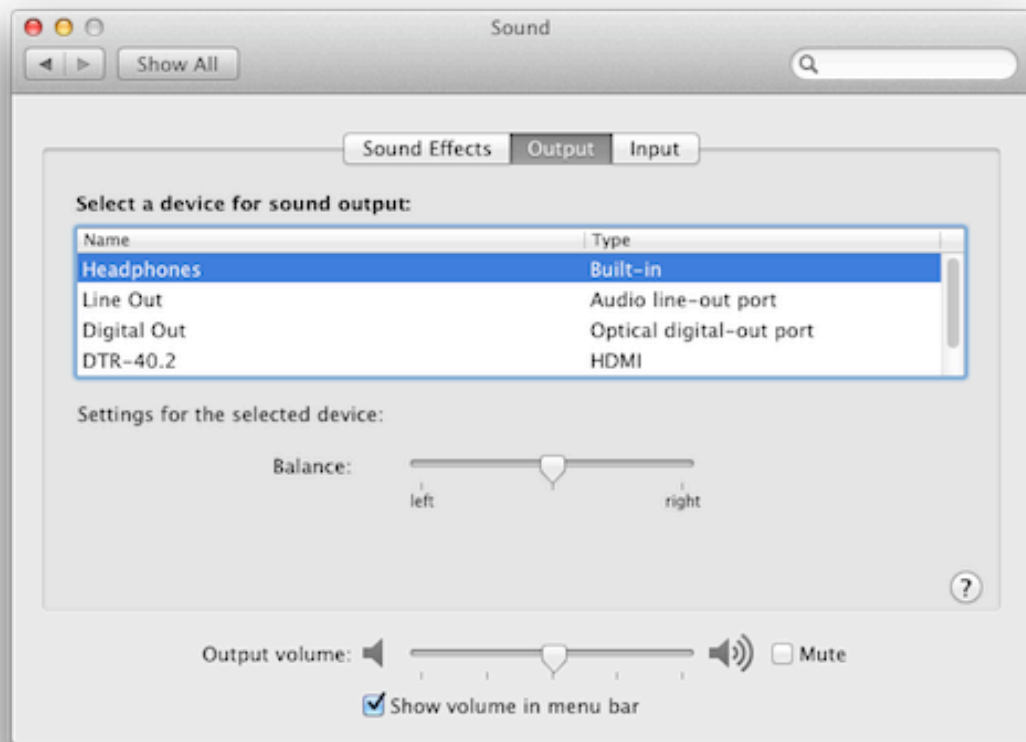
System Preferences/Sound/Input  
Line In - Blue Rear Port  
Audio ID: 889  
Audio ID: 389



System Preferences/Sound/Input  
Internal Microphone - Pink Front Port (Line In as reported)  
Audio ID: 889  
Audio ID: 389

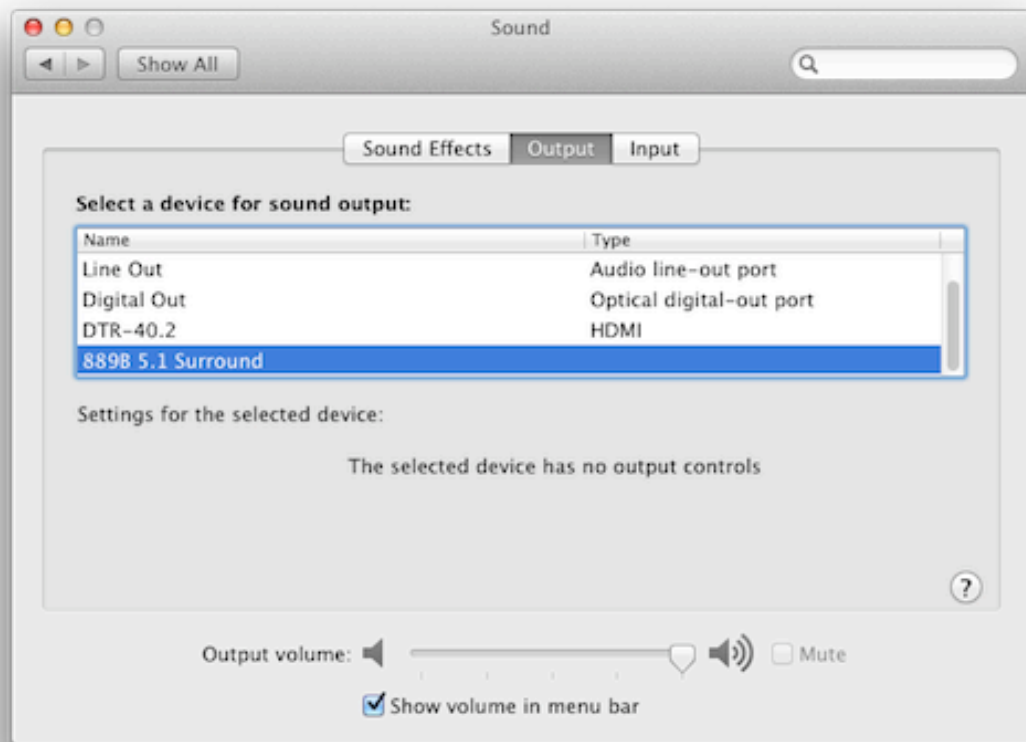


System Preferences/Sound/Output  
Internal Speakers - Green Rear Port  
1st Line Out - Orange Rear Port  
2nd Line Out - Black Rear Port  
Audio ID: 889  
Audio ID: 389 (similar)

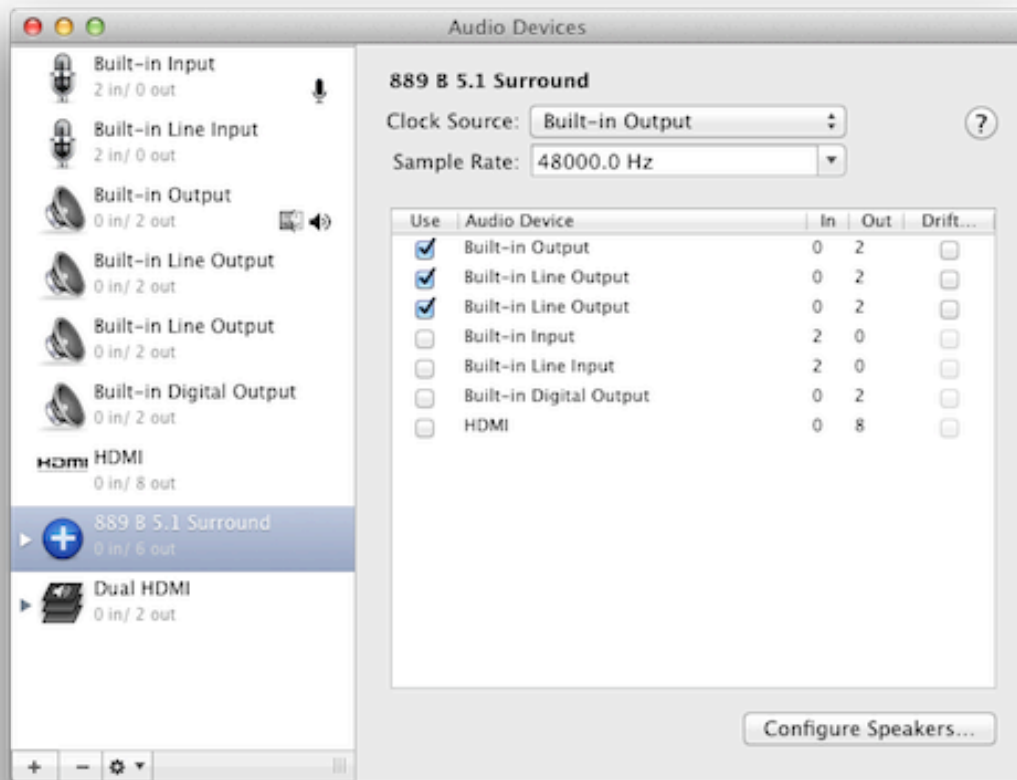


System Preferences/Sound/Output  
Headphones - Green Front Port  
1st Line Out - Black Rear Port  
Audio ID: 389  
Audio ID: 889 (similar)

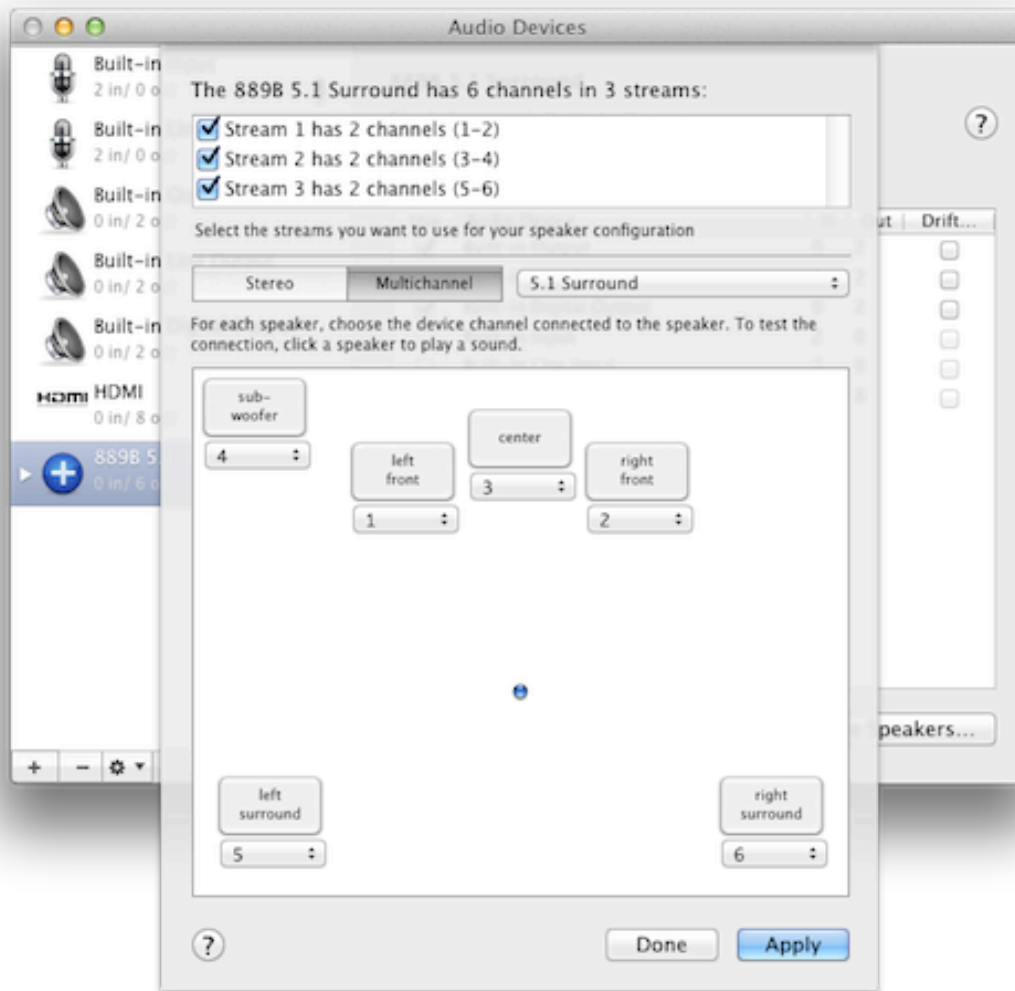




System Preferences/Sound/Output  
Audio MIDI Setup/889 Black Surround  
Audio ID: 889



Audio MIDI Setup/Audio Devices/Create Aggregate Device  
 Built-in Output /Front Speakers - Green Rear Port  
 1st Built-in Line Output /Center/Sub-Woofer- Orange Rear Port  
 2nd Built-in Line Output/Rear (Surround) - Black Rear Port  
 Audio ID: 889



Audio MIDI Setup/Audio Devices/Configure Speakers....

Stream 1/Front Speakers - Green Rear Port

Stream 2/Center/Sub-Woofer- Orange Rear Port

Stream 3/Rear (Surround) - Black Rear Port

Audio ID: 889

### Part 3. DSDT/HDEF Edits

DSDT/HDEF  
Audio ID: 889  
889 HDEF

```
Device (HDEF)
{
    Name (_ADR, 0x001B0000)
    Method (_PRW, 0, NotSerialized)
    {
        Return (Package (0x02)
        {
            0x0D,
            0x05
        })
    }

    Method (_DSM, 4, NotSerialized)
    {
        Store (Package (0x04)
        {
            "layout-id",
            Buffer (0x04)
            {
                0x79, 0x03, 0x00, 0x00
            },

            "PinConfigurations",
            Buffer (Zero) {}
        }, Local0)
        DTGP (Arg0, Arg1, Arg2, Arg3, RefOf (Local0))
        Return (Local0)
    }
}
```

DSDT/HDEF  
Audio ID: 389  
389 HDEF

```
Device (HDEF)
{
    Name (_ADR, 0x001B0000)
    Method (_PRW, 0, NotSerialized)
    {
        Return (Package (0x02)
        {
            0x0D,
            0x05
        })
    }

    Method (_DSM, 4, NotSerialized)
    {
        Store (Package (0x06)
        {
            "hda-gfx",
            Buffer (0x0A)
            {
                "onboard-2"
            },

            "layout-id",
            Buffer (0x04)
            {
                0x85, 0x01, 0x00, 0x00
            },

            "PinConfigurations",
            Buffer (Zero) {}
        }, Local0)
        DTGP (Arg0, Arg1, Arg2, Arg3, RefOf (Local0))
        Return (Local0)
    }
}
```