

Optimized_Mountain_Lion_AppleHDA

Realtek ALC885, 887, 888, 889, 892 and 898 audio codecs
AppleHDA.kext, 2.3 MB 10/7/12 v2.3.1

Contents

Part 1. System Information/Audio (Built-in) Screenshots

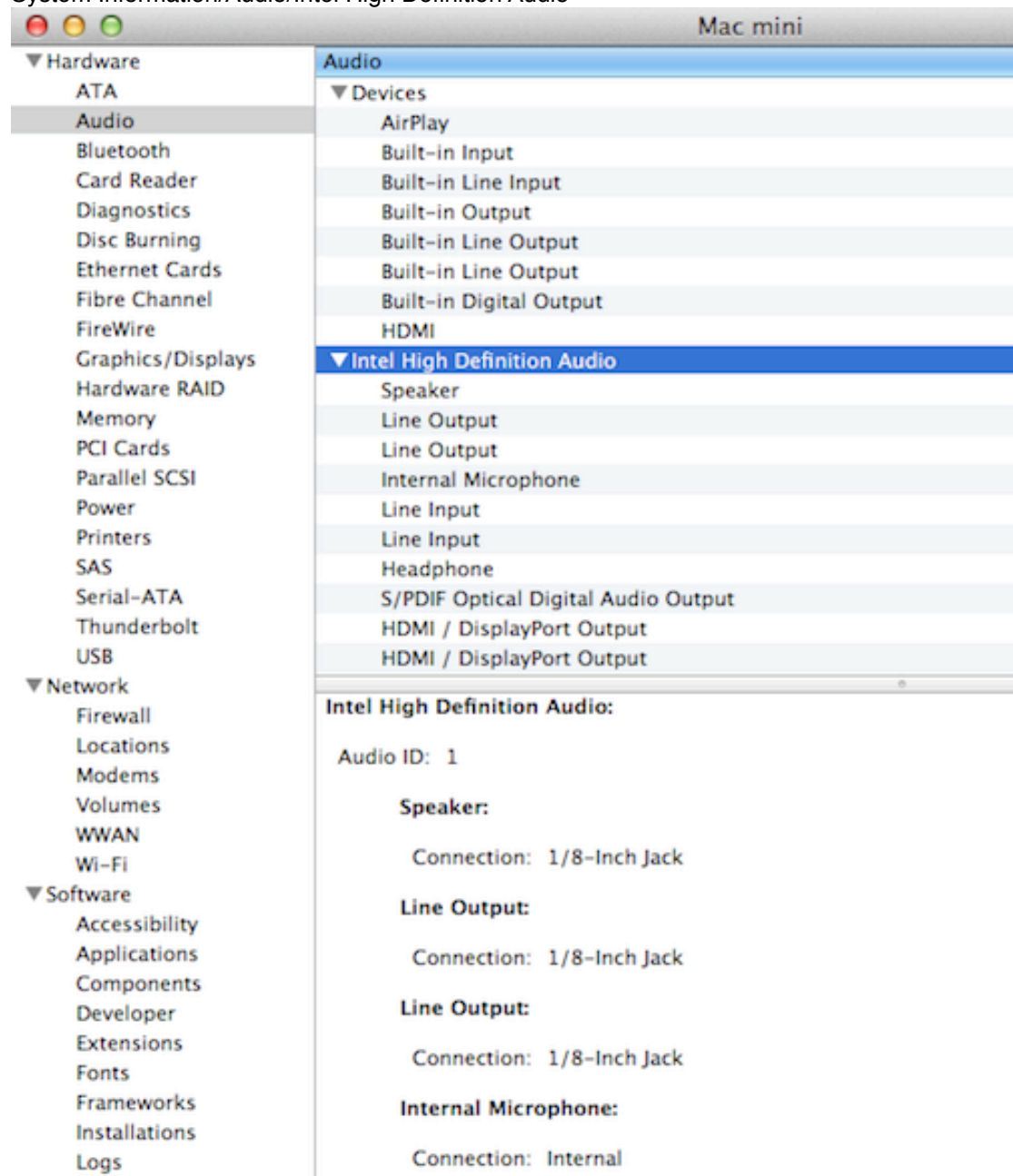
Part 2: System Preferences/Sound Screenshots

Part 3: Audi MIDI Setup Screenshots

Note: Text describes image above text.

Part 1. System Information/Audio (Built-in) Screenshots

System Information/Audio/Intel High Definition Audio



Managed Client
Preference Panes
Printer Software
Profiles
Startup Items
Sync Services

Line Input:

Connection: 1/8-Inch Jack

Line Input:

Connection: 1/8-Inch Jack

Headphone:

Connection: 1/8-Inch Jack

S/PDIF Optical Digital Audio Output:

Connection: Combination Output

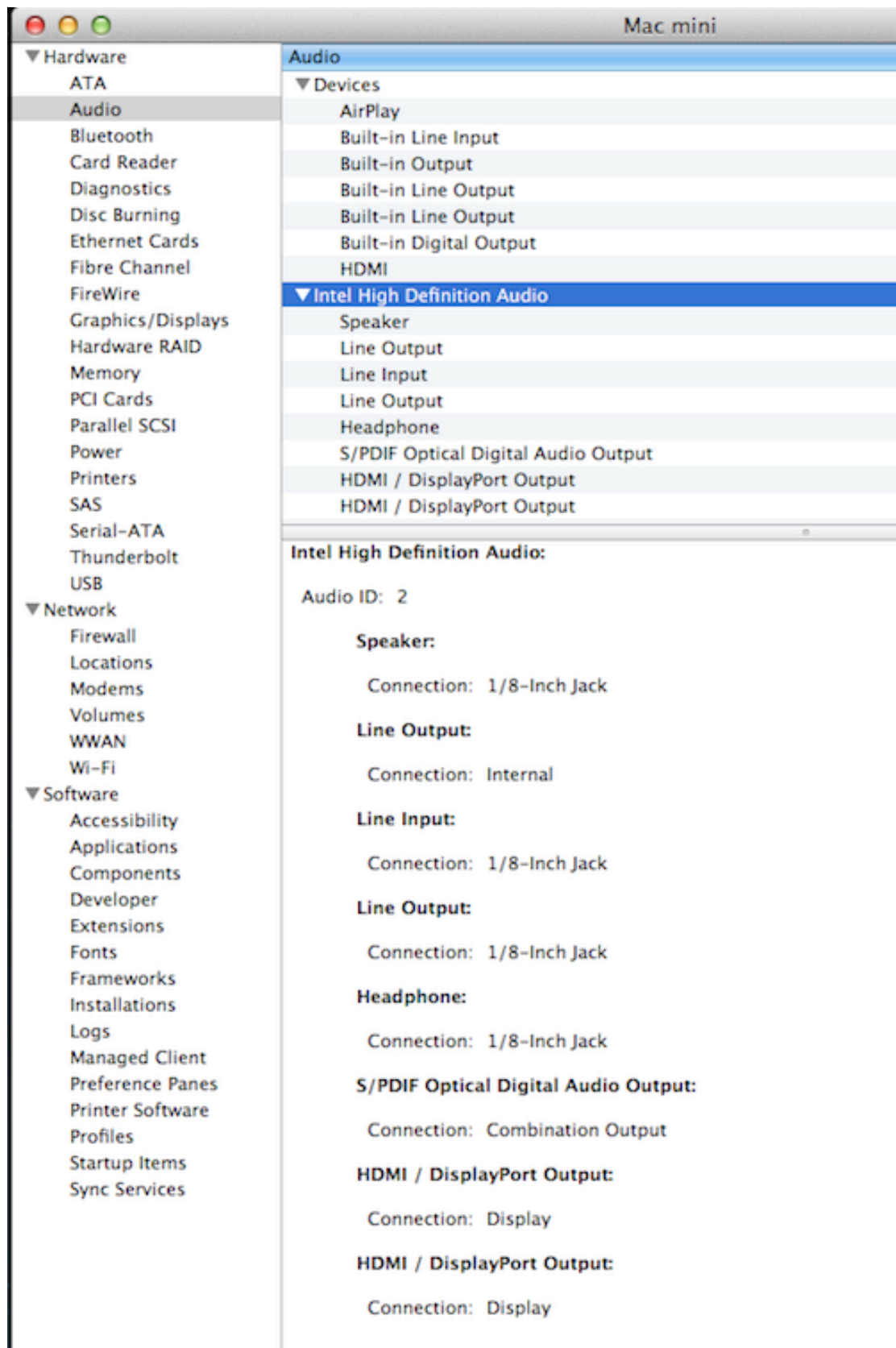
HDMI / DisplayPort Output:

Connection: Display

HDMI / DisplayPort Output:

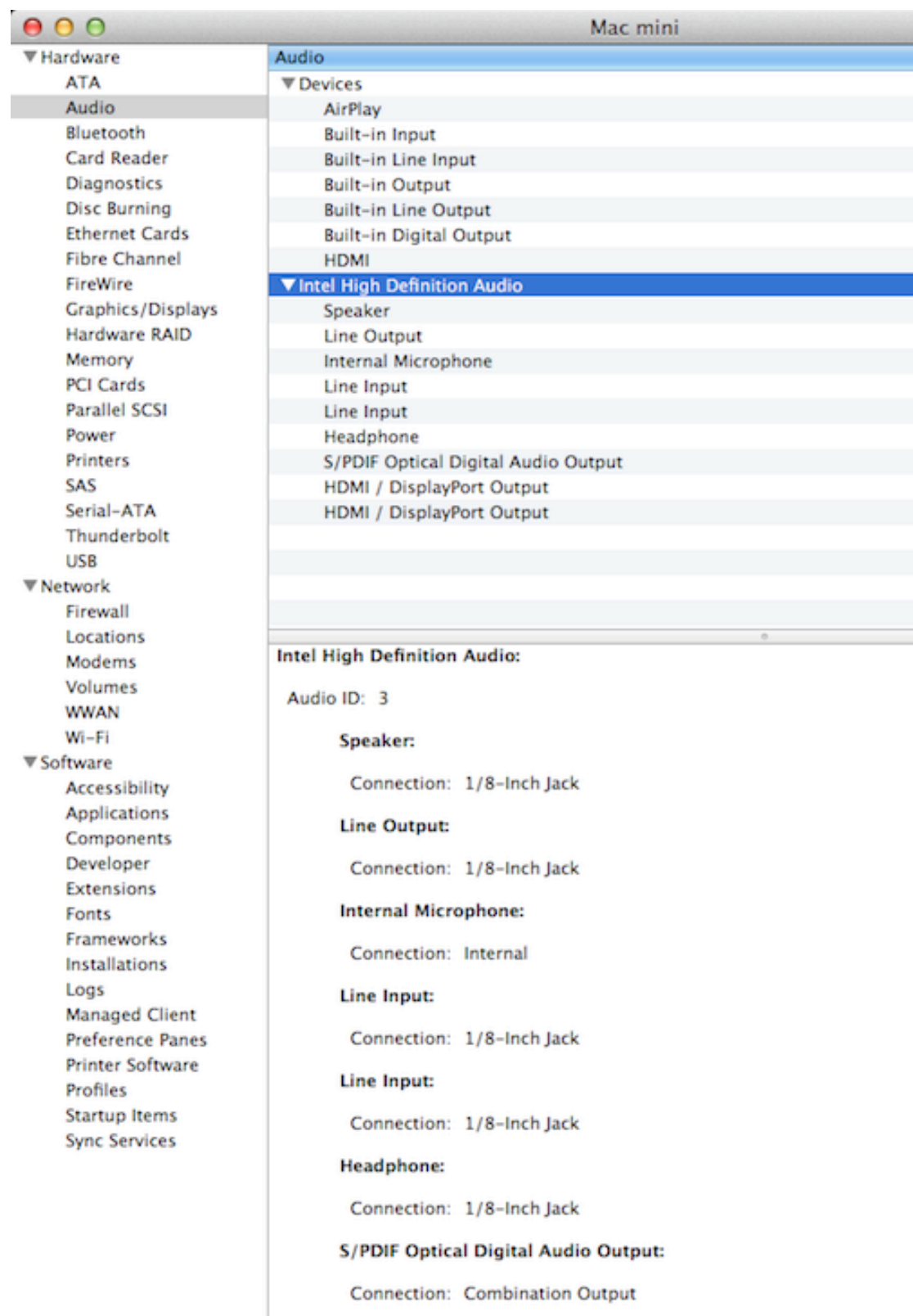
Connection: Display

System Information/Audio/Intel High Definition Audio
ALC8xx on board 5/6 port audio with or without AMD/Nvidia HDMI audio
Audio ID: 1



System Information/Audio/Intel High Definition Audio

ALC8xx on board 3 port audio with or without AMD/Nvidia HDMI audio
Audio ID: 2



HDMI / DisplayPort Output:

Connection: Display

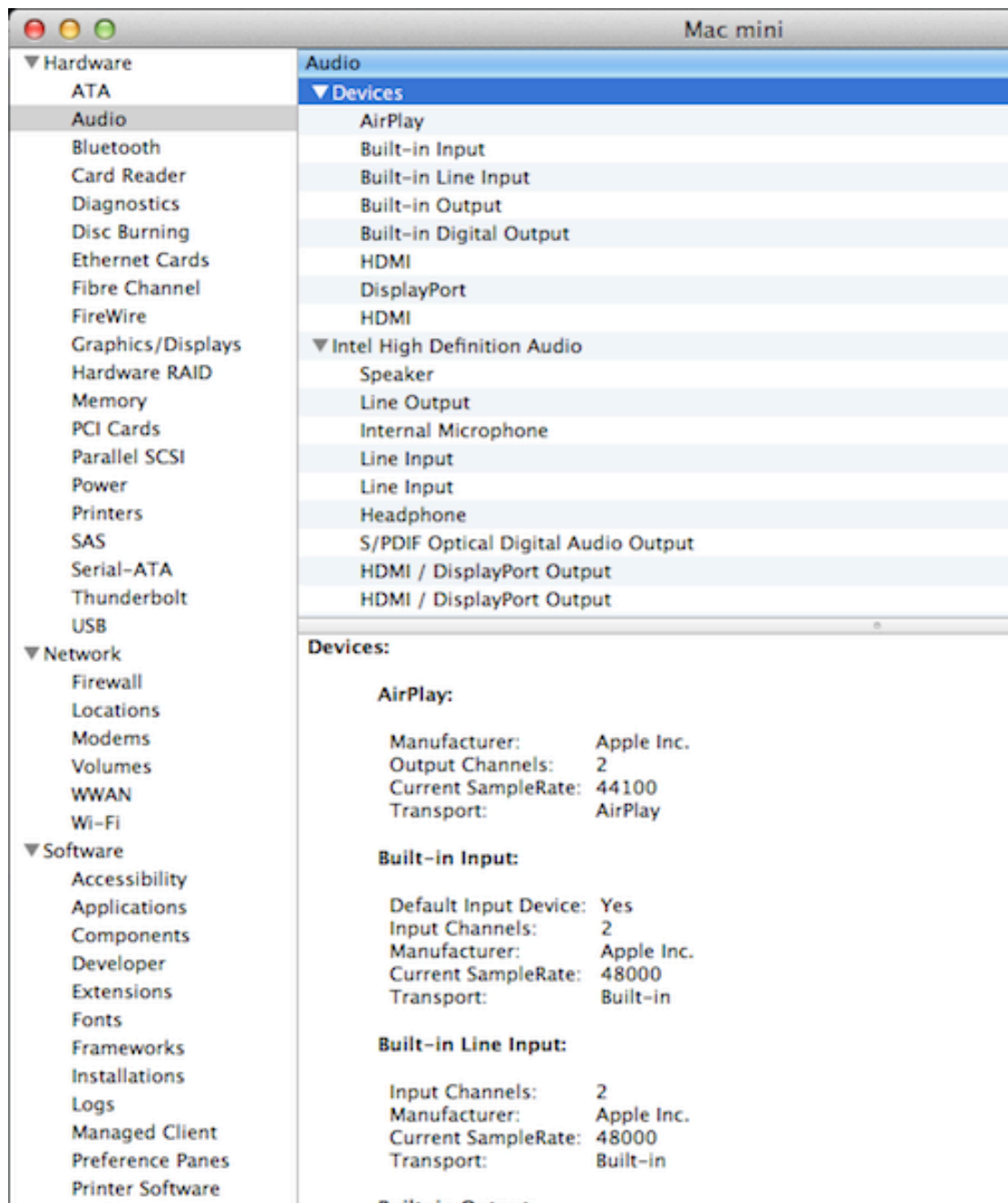
HDMI / DisplayPort Output:

Connection: Display

System Information/Audio/Intel High Definition Audio

ALC8xx on board 3/5/6 port audio and HD3000/HD4000 HDMI audio with or without AMD/Nvidia HDMI audio

Audio ID: 3

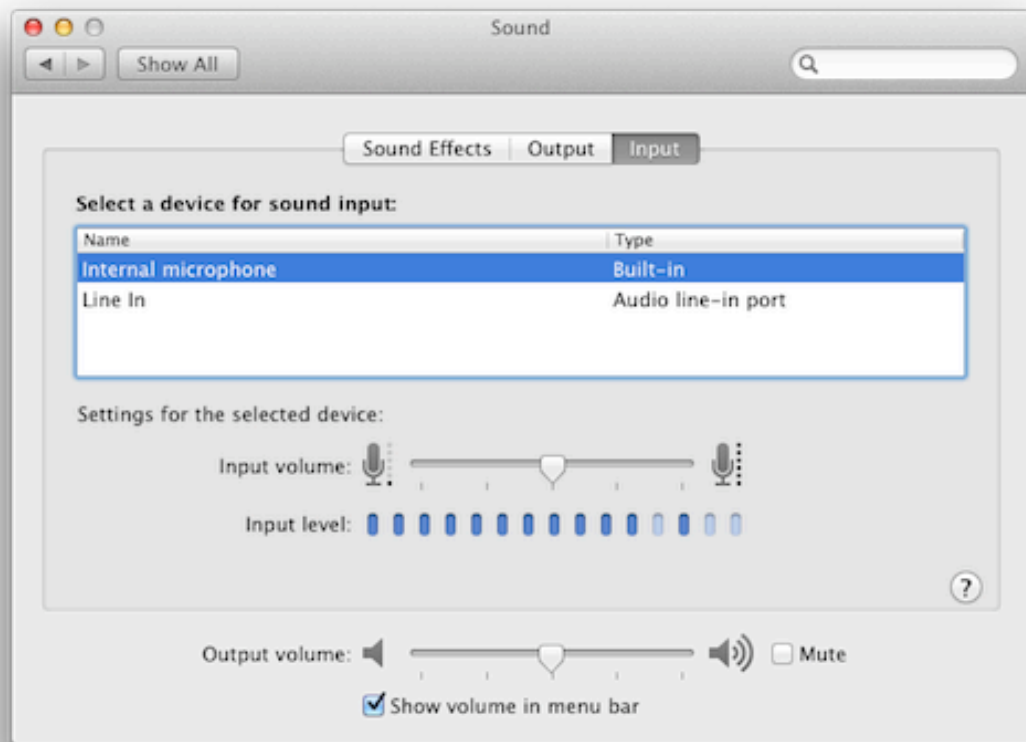


Profiles	Built-in Output:
Startup Items	Manufacturer: Apple Inc.
Sync Services	Output Channels: 2
	Current SampleRate: 48000
	Transport: Built-in
	Built-in Digital Output:
	Manufacturer: Apple Inc.
	Output Channels: 2
	Current SampleRate: 96000
	Transport: Built-in
	HDMI:
	Manufacturer: Apple Inc.
	Output Channels: 8
	Current SampleRate: 48000
	Transport: HDMI
	DisplayPort:
	Manufacturer: Apple Inc.
	Output Channels: 2
	Current SampleRate: 48000
	Transport: DisplayPort
	HDMI:
	Default Output Device: Yes
	Default System Output Device: Yes
	Manufacturer: Apple Inc.
	Output Channels: 8
	Current SampleRate: 96000
	Transport: HDMI

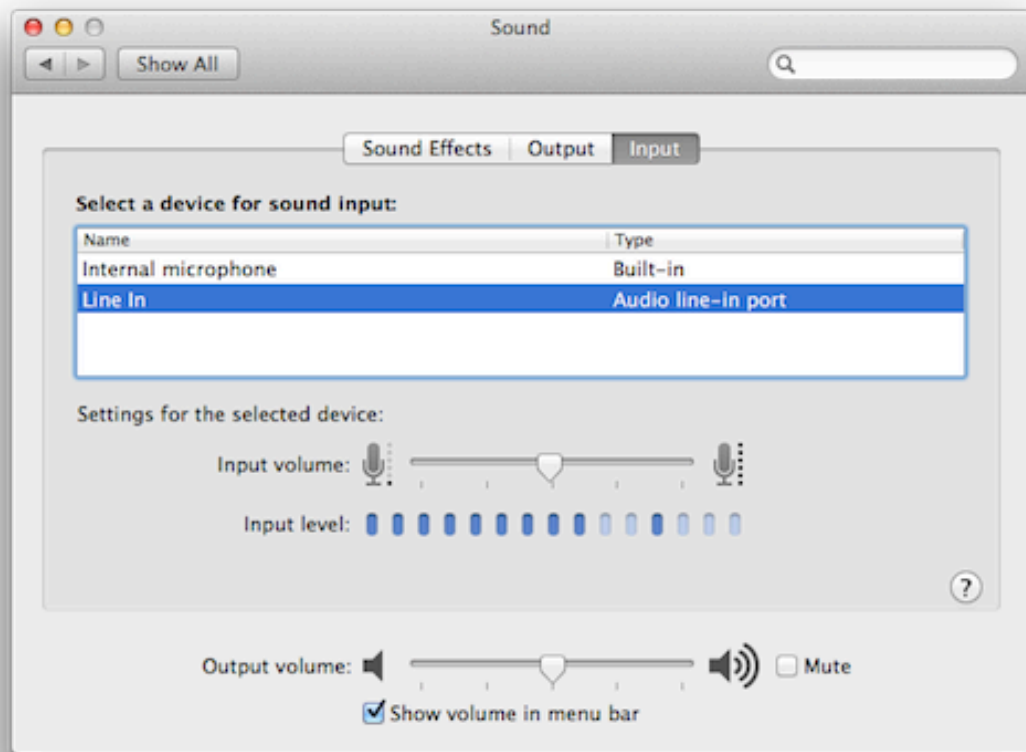
System Information/Audio/Devices
Audio ID: 1, 2 and 3 (similar)

Part 2: System Preferences/Sound Screenshots

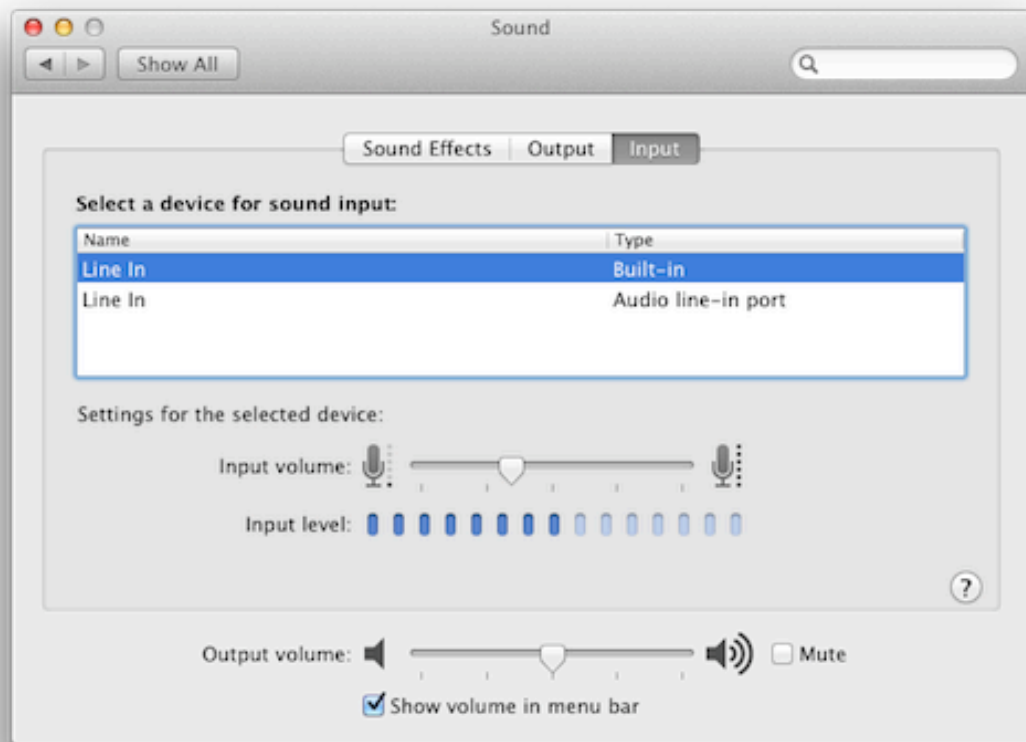
System Preferences/Sound/Input



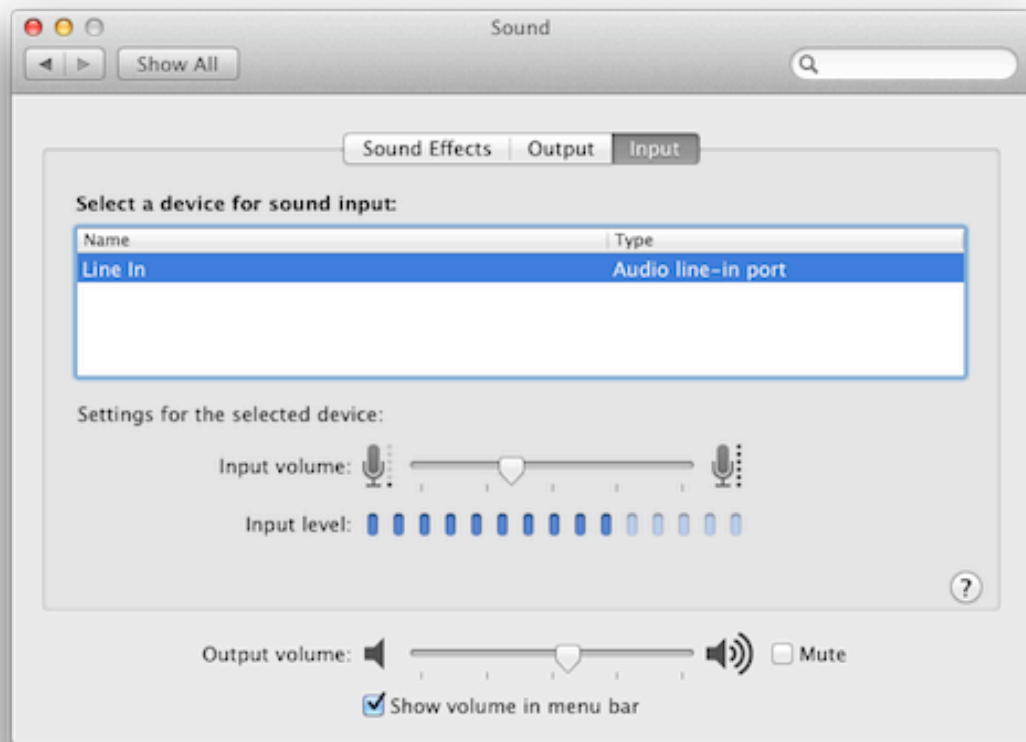
System Preferences/Sound/Input
Internal Microphone - Pink Rear Port
Audio ID: 1
Audio ID: 3



System Preferences/Sound/Input
Line In - Blue Rear Port
Audio ID: 1
Audio ID: 3

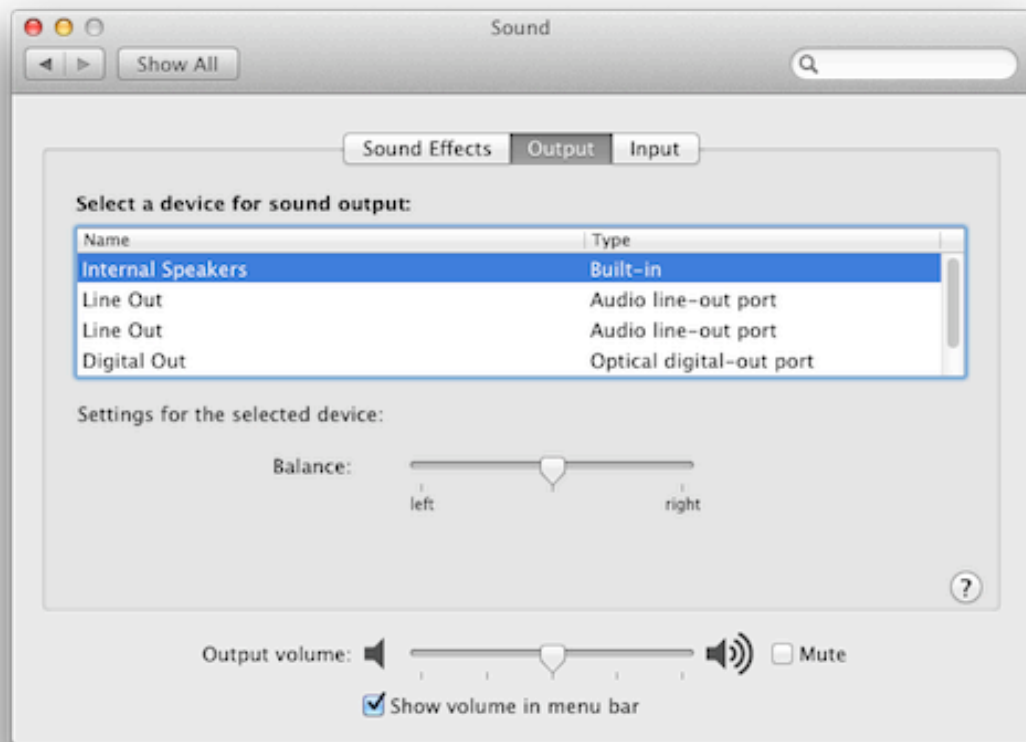


System Preferences/Sound/Input
Front Microphone - Pink Front Port (Line In as reported)
Audio ID: 1
Audio ID: 3



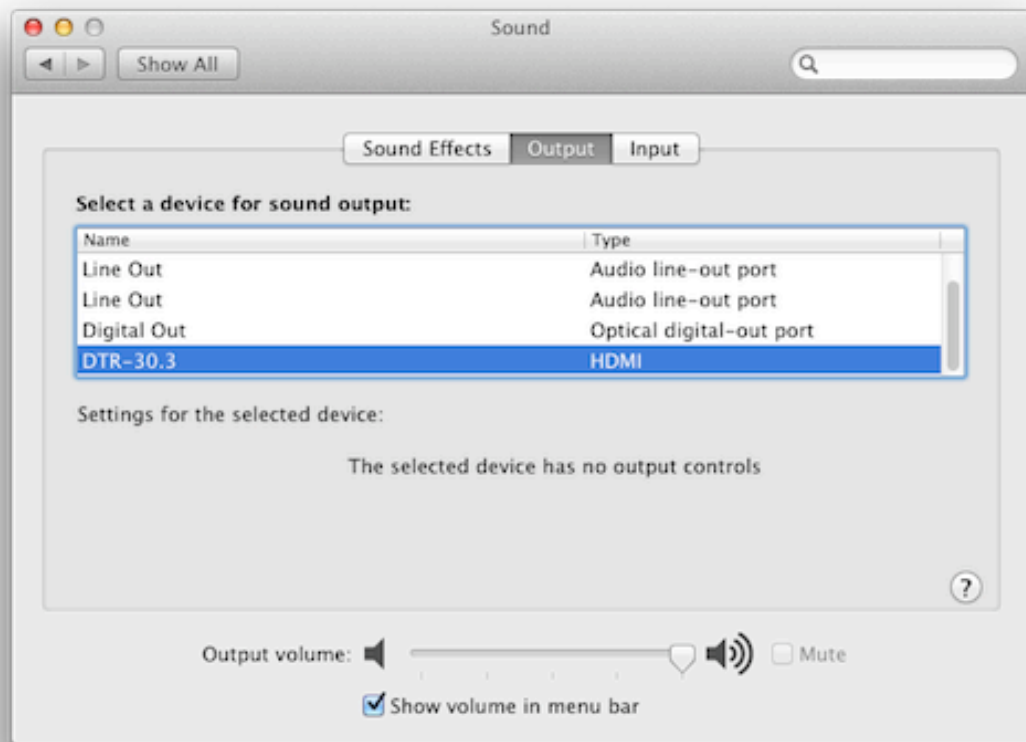
System Preferences/Sound/Input
Front Microphone - Pink Front Port (Line In as reported)
Pink Front Port is the only available audio input
Rear inputs (Pink and Blue) become outputs (See below)
Audio ID: 2

System Preferences/Sound/Output



System Preferences/Sound/Output
 Internal Speakers - Green Rear Port
 1st Line Out - Orange Rear Port
 2nd Line Out - Black Rear Port
 Digital Out - Optical (Toslink) Port
 Audio ID: 1

Internal Speakers - Plug green connector into green motherboard port for front speakers
 1st Line Out - Plug black connector into blue motherboard port for rear speakers
 2nd Line Out - Plug orange connector into pink motherboard port for center/sub speakers
 Digital Out - Optical (Toslink) Port
 Audio ID: 2



System Preferences/Sound/Output

1st Line Out - Orange Rear Port

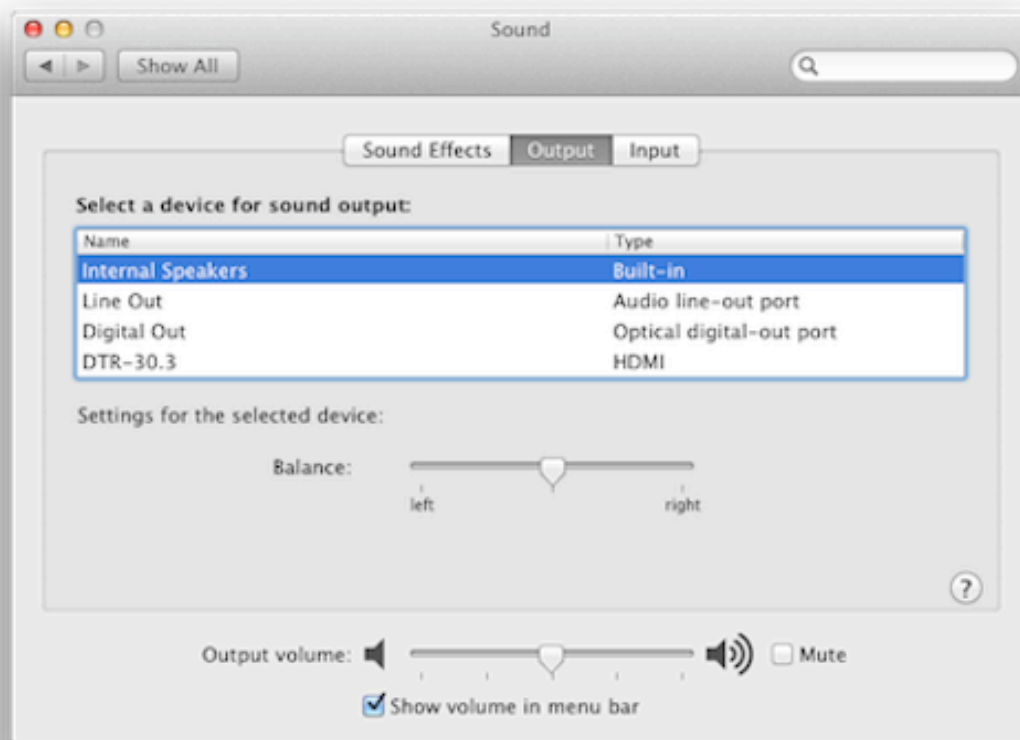
2nd Line Out - Black Rear Port

Digital Out - Optical (Toslink) Port

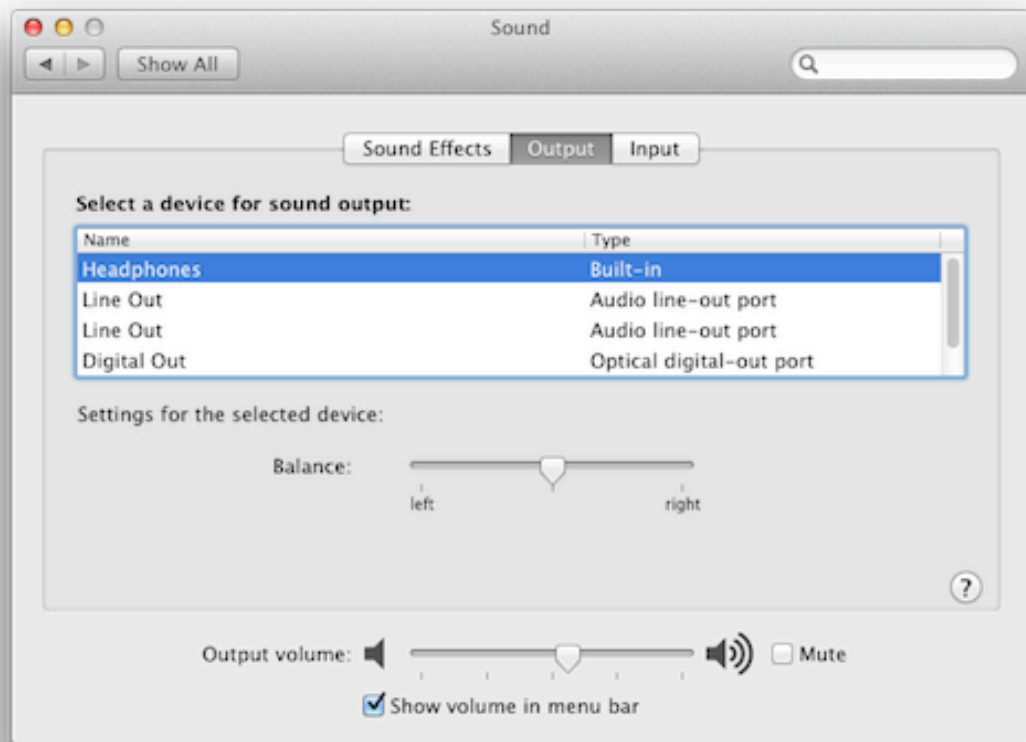
DTR-30.3 (Receiver) - HDMI

Audio ID: 1

Audio ID: 2



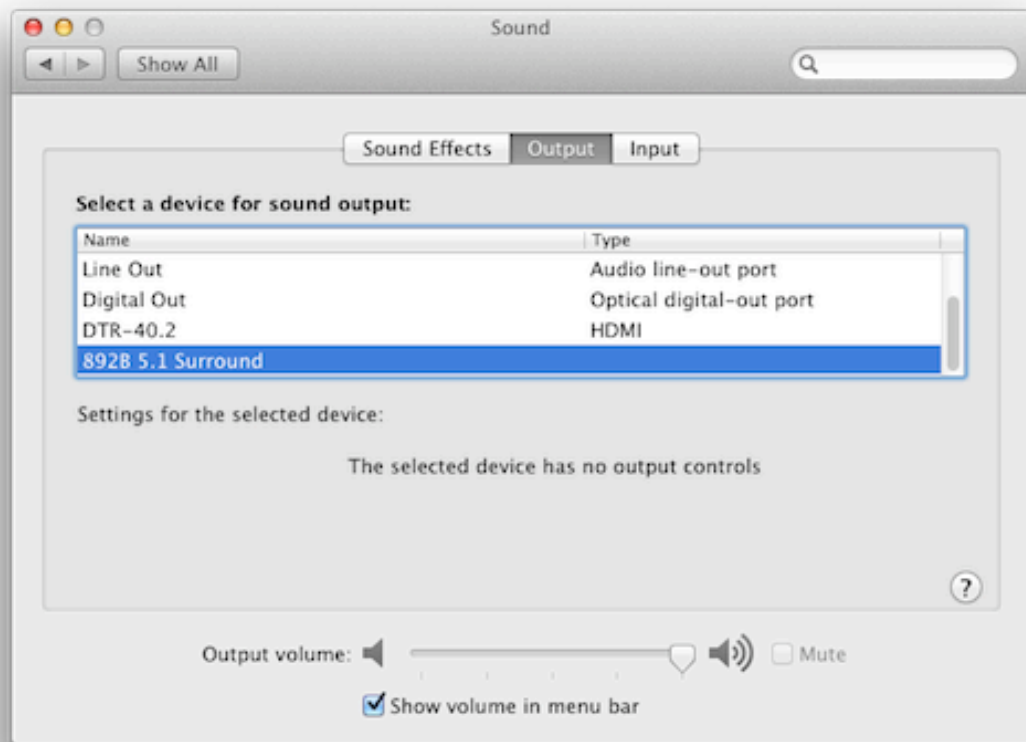
System Preferences/Sound/Output
Internal Speakers - Green Rear Port
Line Out - Black Rear Port
Digital Out - Optical (Toslink) Port
DTR-30.3 (Receiver) - HDMI
Audio ID: 3



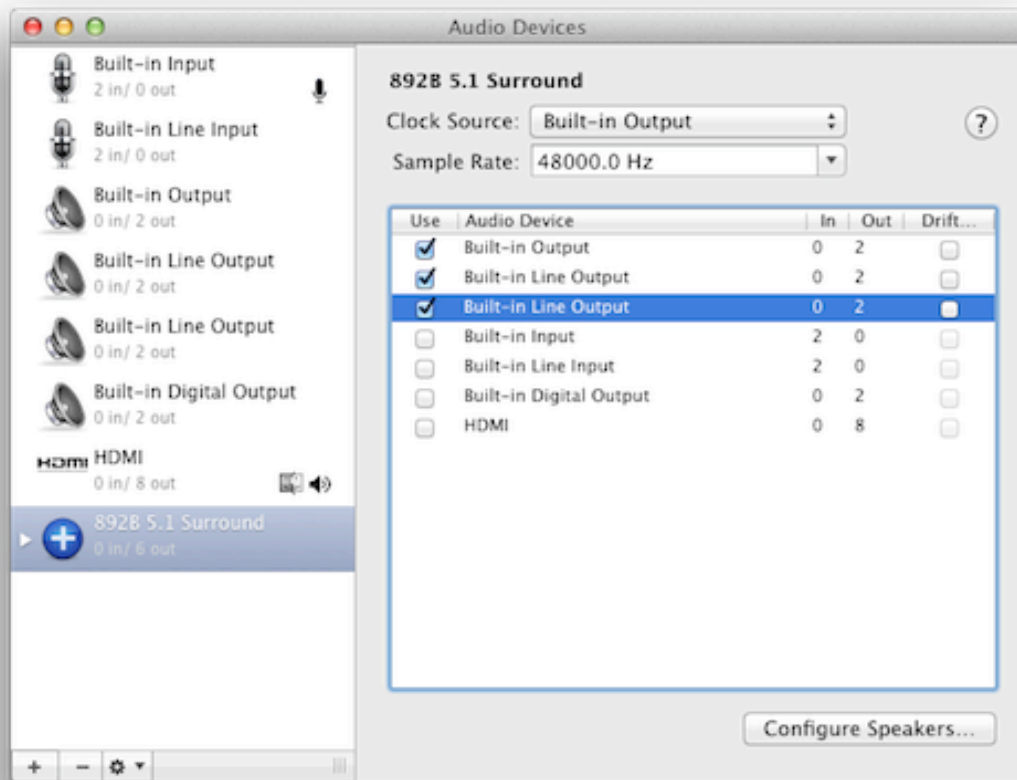
System Preferences/Sound/Output
Headphones - Green Front Port
1st Line Out - Orange Rear Port
2nd Line Out - Black Rear Port
Digital Out - Optical (Toslink) Port
Audio ID: 1
Audio ID: 2

Part 3: Audi MIDI Setup Screenshots

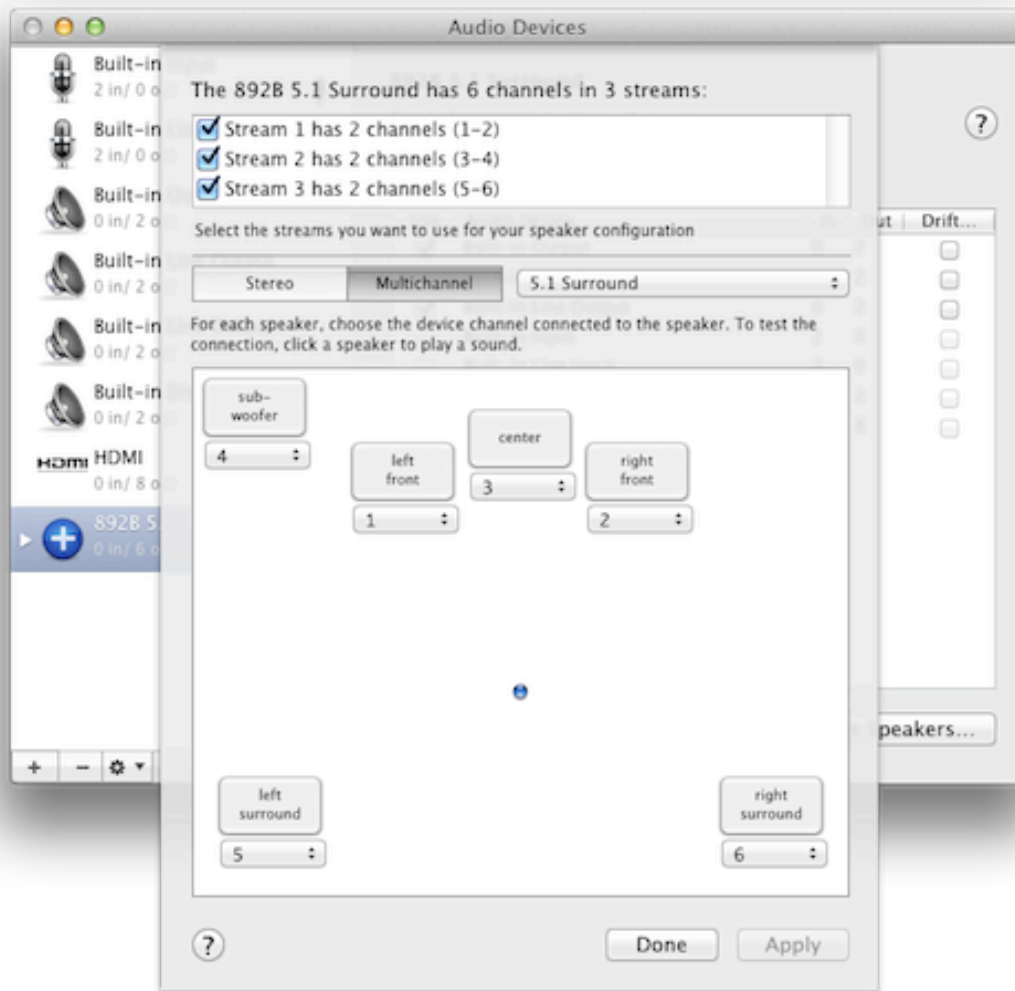
System Preferences/Sound/Output



System Preferences/Sound/Output
Audio MIDI Setup/892 Black 5..1 Surround
Audio ID: 1
Audio ID: 2



Audio MIDI Setup/Audio Devices/Create Aggregate Device
 Built-in Output /Front Speakers - Green Rear Port
 1st Built-in Line Output /Center/Sub-Woofer- Orange Rear Port
 2nd Built-in Line Output/Rear (Surround) - Black Rear Port
 Audio ID: 1
 Audio ID: 2



Audio MIDI Setup/Audio Devices/Configure Speakers....

Stream 1/Front Speakers - Green Rear Port

Stream 2/Center/Sub-Woofer- Orange Rear Port

Stream 3/Rear (Surround) - Black Rear Port

Audio ID: 1

Audio ID: 2